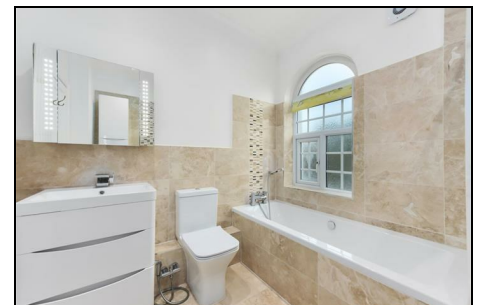
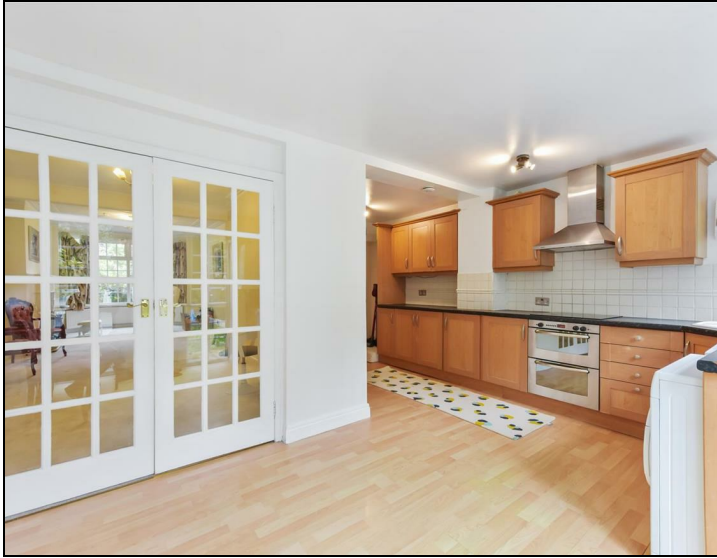


West Barnes Lane Motspur Park, KT3 6HR

£800,000 Freehold



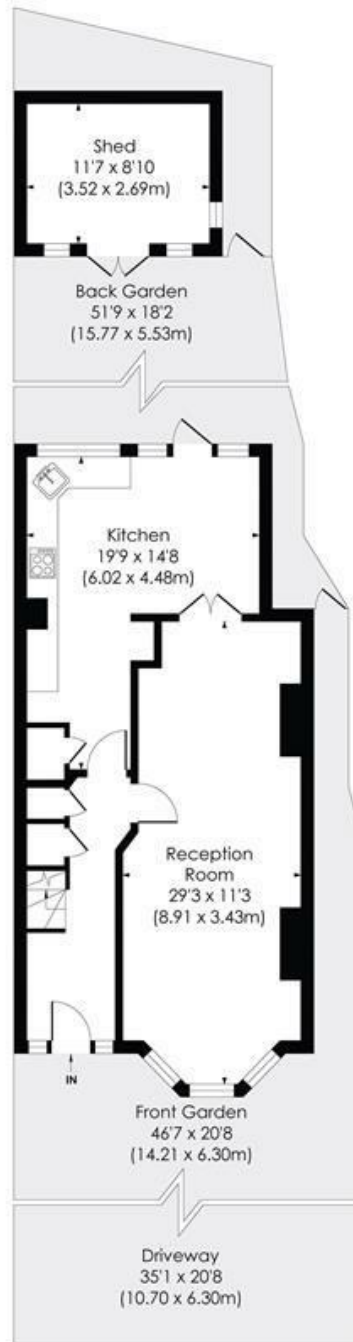
This attractive, fully extended 1352 sqft FOUR BEDROOM, TWO BATHROOM 1920's Semi Detached house is set back from the road with a larger than average front garden and off street parking. There is also a spacious through lounge, extended kitchen/dining room, 67'ft South West facing rear garden with Summer house and a modern family bathroom. Perfectly located for both Raynes Park and Motspur Park Stations, Schools and amenities. No Onward Chain.



WEST BARNES LANE, KT3

Approx. Gross Internal Floor Area

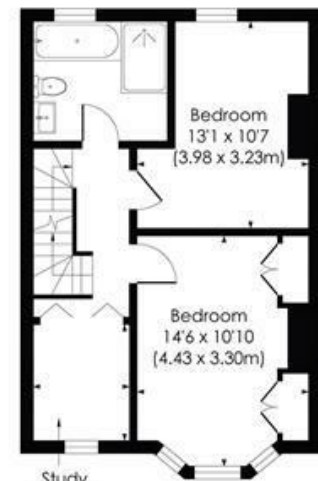
1352 Sq. ft/125.63 Sq. m



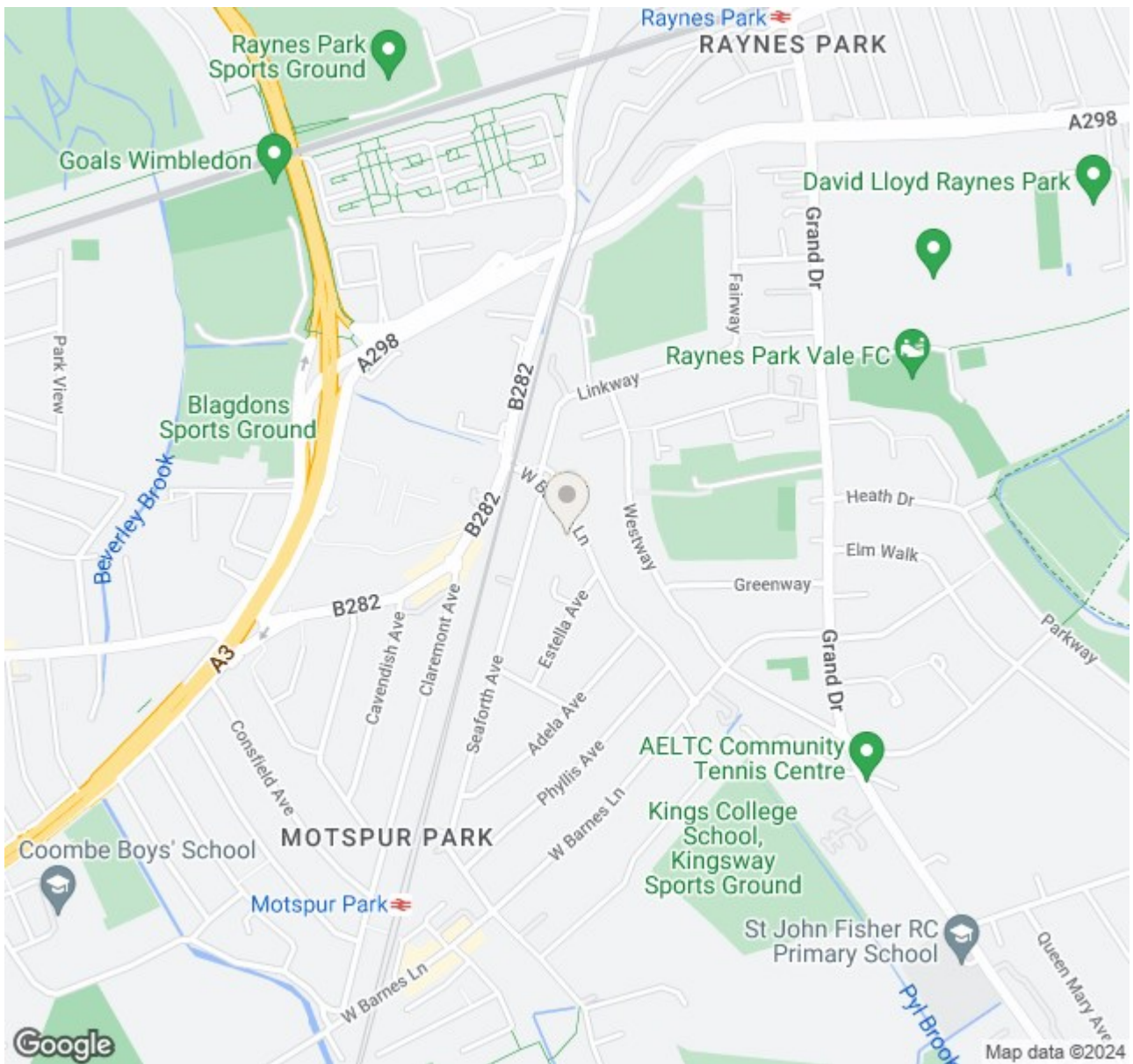
GROUND FLOOR



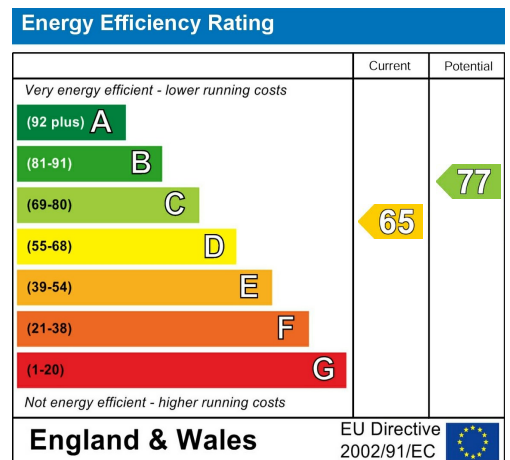
SECOND FLOOR



FIRST FLOOR



- Four Bedroom - Two Bathroom -1,352 sqft
- Fully Extended 1920's Semi Detached House
- Large Front Garden with Driveway for Two Cars
- 67'ft South West Facing Rear Garden with Summer House
- Close to Motspur Park and Raynes Park Stations
- Spacious Through Lounge - Extended Kitchen/Dining Room
- No Onward Chain
- Attractive Front Fascia - Side Access
- EPC - D
- Council Tax Band - E



For Free Mortgage Quote and Best Mortgage Rates, call Ellisons Mortgage Advisor on 0208 944 9595



Although these particulars are believed to be correct, their accuracy is not guaranteed and they do not form part of any contract.

Celebrating 30 years of successful Sales and Lettings in Merton

